



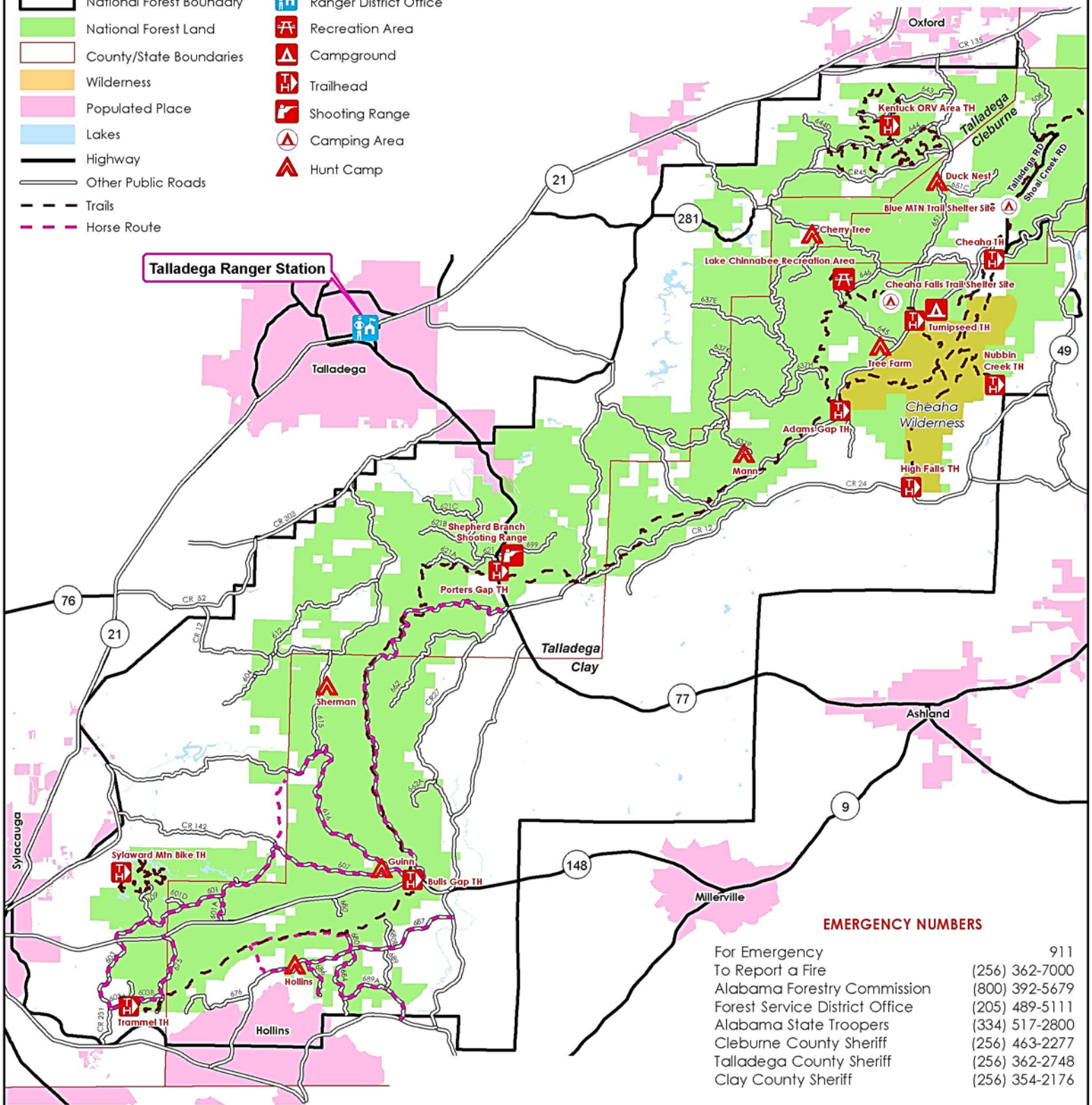
United States Department of Agriculture

TALLADEGA NATIONAL FOREST TALLADEGA RANGER DISTRICT RECREATION MAP



Legend

- National Forest Boundary
- National Forest Land
- County/State Boundaries
- Wilderness
- Populated Place
- Lakes
- Highway
- Other Public Roads
- Trails
- Horse Route
- Ranger District Office
- Recreation Area
- Campground
- Trailhead
- Shooting Range
- Camping Area
- Hunt Camp



Talladega Ranger Station

EMERGENCY NUMBERS

For Emergency	911
To Report a Fire	(256) 362-7000
Alabama Forestry Commission	(800) 392-5679
Forest Service District Office	(205) 489-5111
Alabama State Troopers	(334) 517-2800
Cleburne County Sheriff	(256) 463-2277
Talladega County Sheriff	(256) 362-2748
Clay County Sheriff	(256) 354-2176

Website www.fs.usda.gov/alabama
 Twitter @NFInAlabama
 Mobile App Download "Alabama Great Escapes"
 Detailed Trail and Road Maps are available for sale.

This product is reproduced from geospatial information prepared by the U.S. Department of Agriculture, Forest Service. GIS data and product accuracy may vary. They may be developed from sources of differing accuracy, accurate only at certain scales, based on modeling or interpretation, incomplete while being created or revised, etc. Using GIS products for purposes other than those for which they were created may yield inaccurate or misleading results. This information was released on 3/16/2016. The Forest Service reserves the right to correct, update, modify or replace GIS products without notification.



Forest Service
Southern Region

National Forests
in Alabama

Map
REC001

Date
3/16/2016

USDA is an equal opportunity provider and employer.