

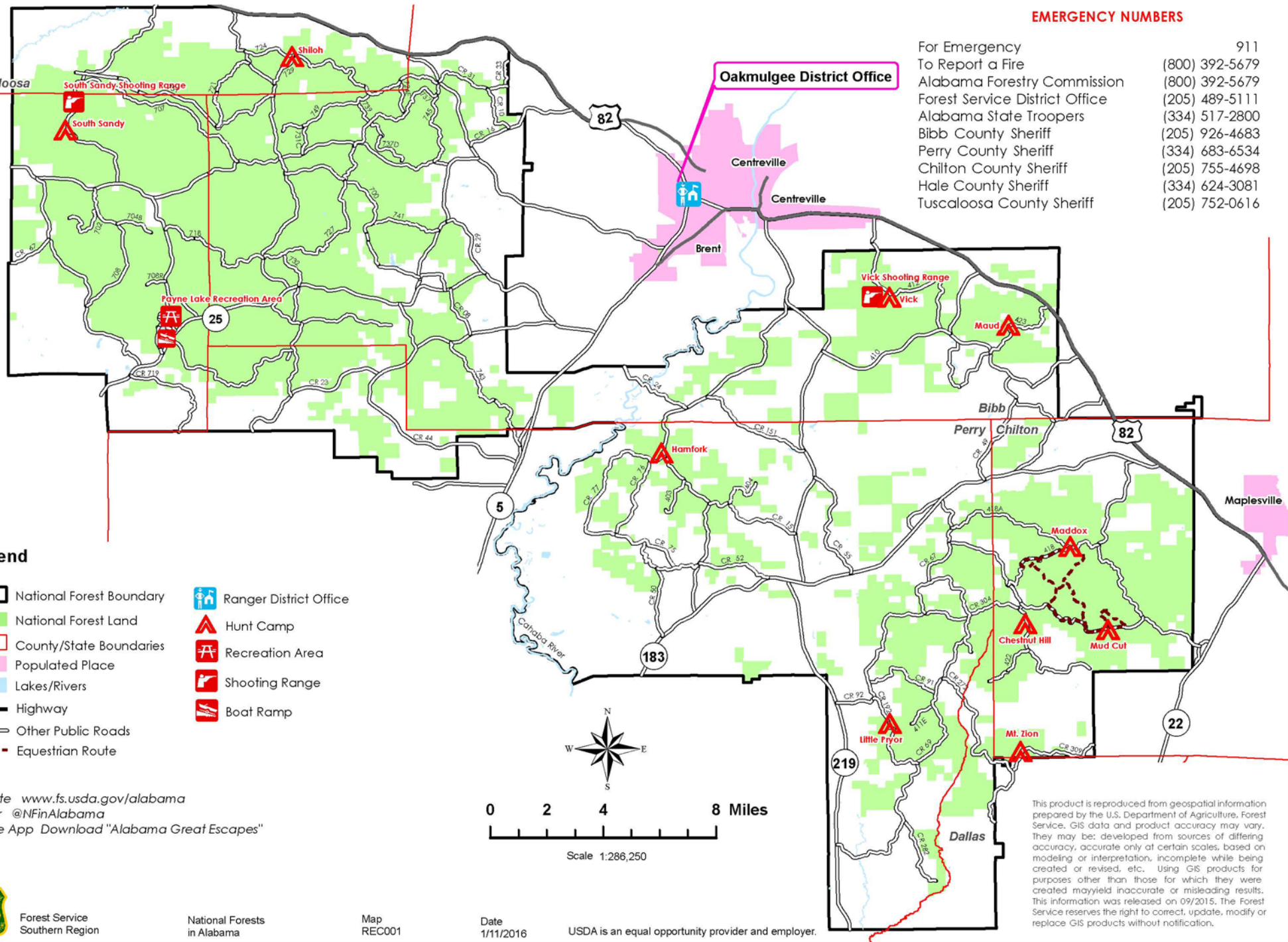


United States Department of Agriculture

TALLADEGA NATIONAL FOREST OAKMULGEE RANGER DISTRICT RECREATION MAP

EMERGENCY NUMBERS

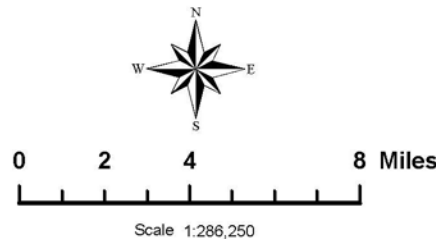
For Emergency	911
To Report a Fire	(800) 392-5679
Alabama Forestry Commission	(800) 392-5679
Forest Service District Office	(205) 489-5111
Alabama State Troopers	(334) 517-2800
Bibb County Sheriff	(205) 926-4683
Perry County Sheriff	(334) 683-6534
Chilton County Sheriff	(205) 755-4698
Hale County Sheriff	(334) 624-3081
Tuscaloosa County Sheriff	(205) 752-0616



Legend

- National Forest Boundary
- National Forest Land
- County/State Boundaries
- Populated Place
- Lakes/Rivers
- Highway
- Other Public Roads
- Equestrian Route
- Ranger District Office
- Hunt Camp
- Recreation Area
- Shooting Range
- Boat Ramp

Website www.fs.usda.gov/alabama
 Twitter @NFinAlabama
 Mobile App Download "Alabama Great Escapes"



This product is reproduced from geospatial information prepared by the U.S. Department of Agriculture, Forest Service. GIS data and product accuracy may vary. They may be: developed from sources of differing accuracy, accurate only at certain scales, based on modeling or interpretation, incomplete while being created or revised, etc. Using GIS products for purposes other than those for which they were created may yield inaccurate or misleading results. This information was released on 09/2015. The Forest Service reserves the right to correct, update, modify or replace GIS products without notification.



Forest Service
Southern Region

National Forests
in Alabama

Map
REC001

Date
1/11/2016

USDA is an equal opportunity provider and employer.