

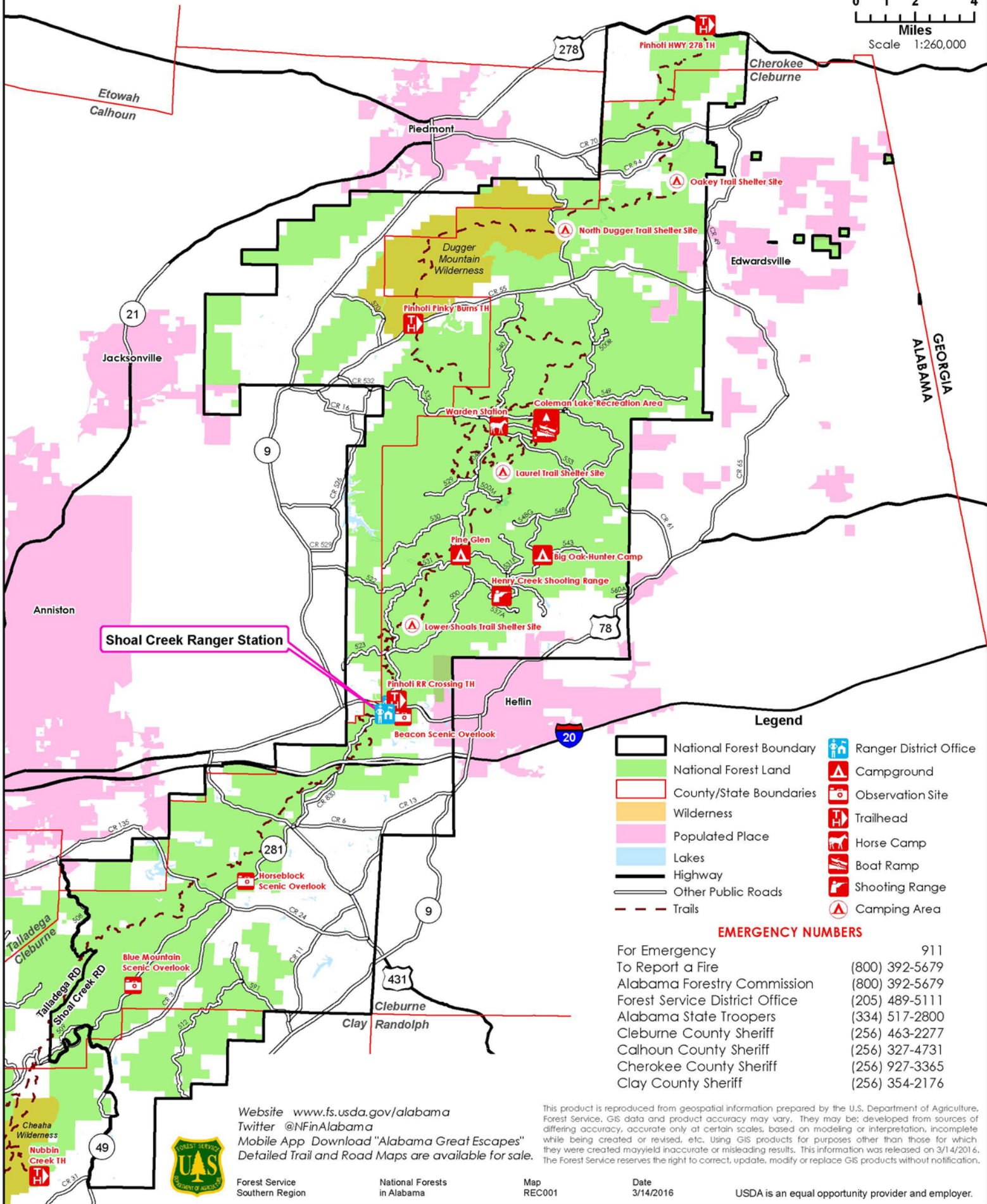


United States Department of Agriculture

TALLADEGA NATIONAL FOREST SHOAL CREEK RANGER DISTRICT RECREATION MAP



0 1 2 4
Miles
Scale 1:260,000



Shoal Creek Ranger Station

Legend

- National Forest Boundary
- National Forest Land
- County/State Boundaries
- Wilderness
- Populated Place
- Lakes
- Highway
- Other Public Roads
- Trails
- Ranger District Office
- Campground
- Observation Site
- Trailhead
- Horse Camp
- Boat Ramp
- Shooting Range
- Camping Area

EMERGENCY NUMBERS

- For Emergency 911
- To Report a Fire (800) 392-5679
- Alabama Forestry Commission (800) 392-5679
- Forest Service District Office (205) 489-5111
- Alabama State Troopers (334) 517-2800
- Cleburne County Sheriff (256) 463-2277
- Calhoun County Sheriff (256) 327-4731
- Cherokee County Sheriff (256) 927-3365
- Clay County Sheriff (256) 354-2176

Website www.fs.usda.gov/alabama
 Twitter @NFInAlabama
 Mobile App Download "Alabama Great Escapes"
 Detailed Trail and Road Maps are available for sale.



Forest Service
Southern Region

National Forests
in Alabama

Map
REC001

Date
3/14/2016

USDA is an equal opportunity provider and employer.

This product is reproduced from geospatial information prepared by the U.S. Department of Agriculture, Forest Service. GIS data and product accuracy may vary. They may be developed from sources of differing accuracy, accurate only at certain scales, based on modeling or interpretation, incomplete while being created or revised, etc. Using GIS products for purposes other than those for which they were created may yield inaccurate or misleading results. This information was released on 3/14/2016. The Forest Service reserves the right to correct, update, modify or replace GIS products without notification.